



VR-4HD RCS is software designed to control the VR-4HD remotely using a computer. By connecting the VR-4HD and a computer via USB, along with operating the unit from the computer, you can also save and call up settings and perform updates for the system software. Also provided is a backup feature for saving all settings in the VR-4HD to the computer.

VR-4HD RCS

Dedicated Remote Control Software

Owner's Manual Version 2.0 and later

VR-4HD RCS is compatible with version 2.0 and later of the VR-4HD system program. Use the VR-4HD with its system program updated to the latest version.

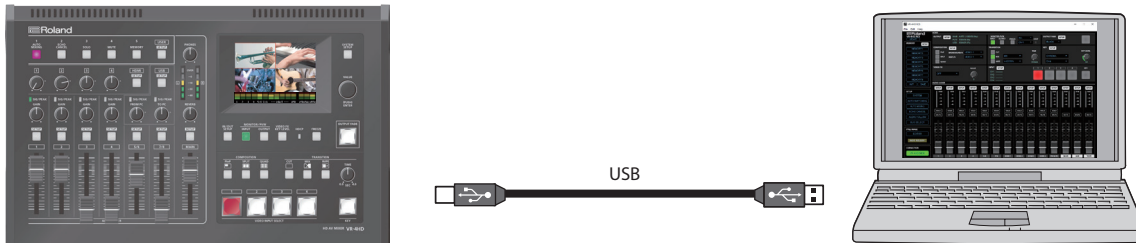
Contents

Introduction	2
About VR-4HD RCS	2
System Requirements	2
Making the Connection to a Computer	2
Installing/Uninstalling VR-4HD RCS	3
Starting/Quitting VR-4HD RCS	4
Panel Descriptions	6
STILL IMAGE EDITOR Screen	10
Sending Still Images to the VR-4HD	12
Saving VR-4HD RCS Settings As a File	13
Backing Up/Restoring VR-4HD Settings	14
Updating the System Software of the VR-4HD	15

Introduction

About VR-4HD RCS

VR-4HD RCS is software for connecting a computer and the VR-4HD via USB and operating the VR-4HD remotely using the computer. From VR-4HD RCS, you can perform panel operations and make menu settings on the VR-4HD. You can also save settings created in VR-4HD RCS to a file on the computer (*1), and save the settings on the VR-4HD itself. Performing operations in VR-4HD RCS is possible even when no connection is made to the VR-4HD (offline) (*2). This means that at times such as during prior planning for system design, you can create settings using only VR-4HD RCS and save the created settings to the on-site VR-4HD later. In addition to this, a backup feature for saving all settings in the VR-4HD to a computer and a feature for updating the VR-4HD's system program are also provided.



(*1) Only VR-4HD RCS settings are saved in the file. Values in the VR-4HD's memories (1 through 8) are not saved.
(*2) Items that can be manipulated while offline are limited.

System Requirements

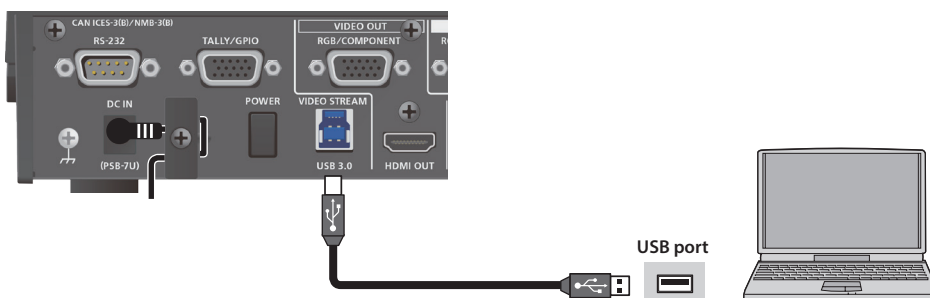
Operating System	Windows	Windows 7 Service Pack 1 or later
	Mac	macOS 10.12 or later
CPU	Windows	Intel Core 2 Duo or higher, or compatible processor * No assurance is made regarding the compatibility of compatible processors themselves.
	Mac	Intel Processor
RAM	2 GB or more	
Required Disk Space	100 MB or more	
Graphics	1024 x 768 resolution or higher Full Color (24-bit) or higher	
USB Port	USB 2.0	

* Operation of VR-4HD RCS on a standard computer that satisfies the conditions just described has been confirmed, but all operation under these conditions is not assured. Please be aware that even under identical conditions, computer-specific differences in design specifications or usage environment might result in differences in processing capacity.

Making the Connection to a Computer

* Making the connection using an extension cable or USB hub might result in the computer failing to recognize the VR-4HD. We recommend using a direct connection between the VR-4HD and the computer.

1. Using a USB cable, connect a USB port on the computer to the USB 3.0 port on the VR-4HD.



2. Turn on the power to the VR-4HD.
3. Start the computer.
4. Wait for communication between the VR-4HD and the computer to be established.
When communication with the computer starts, the operating system's standard driver is automatically installed.

Installing/Uninstalling VR-4HD RCS

VR-4HD RCS is available for download from the Roland website (<http://proav.roland.com/>).

Installing

Windows

1. Right-click the downloaded compressed file, then click “Expand All.”

The setup program (Roland_VR-4HD_RCS_Installer.exe) is expanded.

2. Double-click “Roland_VR-4HD_RCS_Installer.exe” to run it.

3. Follow the instructions in the setup program to install.

* If a User Account Control prompt appears, click [OK].

Mac

1. Double-click the downloaded compressed file.

The disk-image file (Roland_VR-4HD_RCS(.dmg)) is expanded.

* Depending on your computing setup, the file might be expanded automatically when downloaded.

2. Double-click “Roland_VR-4HD_RCS(.dmg).”

The “VR-4HD RCS” disk is mounted.

3. Drag the “VR-4HDRCS.app” icon from the mounted disk to your application folder.

4. Unmount the “VR-4HD RCS” disk.

Uninstalling

Windows

1. Working in sequence, click the [Start] button → [Control Panel].

2. When Control Panel appears, click [Uninstall a program] or [Programs and features].

3. When the Programs and Features screen appears, go to the program list and double-click [Roland VR-4HD RCS].

4. Follow the on-screen instructions to uninstall VR-4HD RCS.

* If a User Account Control prompt appears, click [Continue].

Mac

1. Drag the VR-4HDRCS icon from the application folder to the Trash.

Starting/Quitting VR-4HD RCS

Starting

1. Windows

On the computer, go to the “Start” menu and select “All Programs” → “Roland VR-4HD RCS” → “VR-4HD RCS.”
VR-4HD RCS starts and the VR-4HD RCS window appears.

Mac

Double-click the VR-4HDRCS icon.

VR-4HD RCS starts and the VR-4HD RCS window appears.



VR-4HDRCS.app

2. Click the [VR-4HD] button to switch between online and offline.



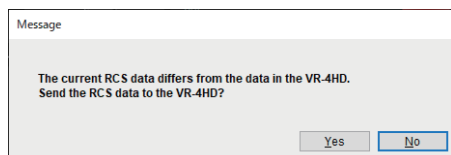
About Online and Offline

VR-4HD RCS has two operation modes: “online” and “offline.”

Button	Operation Mode	Explanation
	Online	You select this when performing real-time control of the VR-4HD. No operation is possible if the computer and VR-4HD are not connected.
 (Not connected to the computer)	Offline	You select this at times such as during prior planning for system configuration. Operation is possible even if the computer and VR-4HD are not connected. * For some functions, such as the memories and the [FREEZE] button, operation is not possible.

If VR-4HD RCS and the VR-4HD Unit Have Different Settings

If VR-4HD RCS and the VR-4HD have different settings when the system is switched online, a popup dialog box asking whether you want to overwrite the VR-4HD’s settings appears. Click the [Yes] button or the [No] button to select whether to overwrite the settings on the VR-4HD.

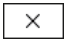


[Yes] button	This sends the settings in VR-4HD RCS to the VR-4HD, overwriting the existing VR-4HD settings. * The setting for the frame rate in VR-4HD RCS is not sent to the VR-4HD.
[No] button	This loads the current settings on the VR-4HD into VR-4HD RCS.

* You can save the values set using VR-4HD RCS to the computer as a file (*.pv8) and load the configured state when needed. For details, refer to “Saving VR-4HD RCS Settings As a File” (p. 13).


Quitting

1. Windows

Click the Close button ( button) for the VR-4HD RCS window.
Alternatively, go to the “File” menu and select “Quit.”

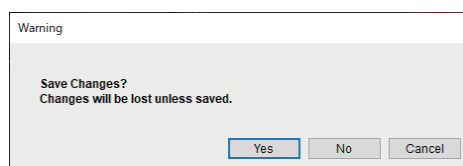
VR-4HD RCS will quit.

Mac

Click the Close button ( button) for the VR-4HD RCS window.
Alternatively, go to the “VR-4HD RCS” menu and select “Quit VR-4HD RCS.”

VR-4HD RCS will quit.

◆ If Settings at Shutdown Have Not Been Saved in a File



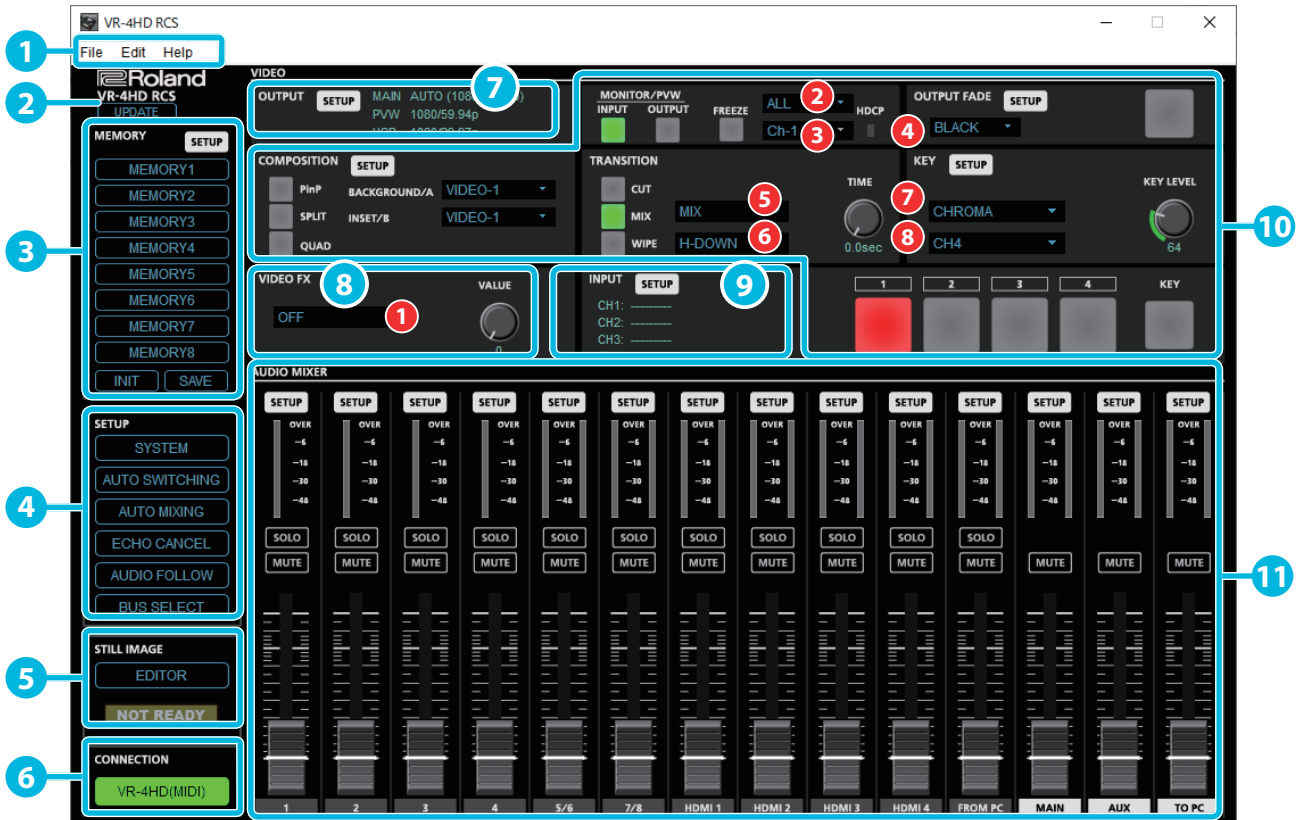
You can take the values of settings made in VR-4HD RCS and save them on the computer as a file (*.pv8; p. 13). If the settings when you quit VR-4HD RCS have not been saved in a file, a popup dialog box asking whether you want to save the settings appears.

Click the [Yes] button or [No] button to select whether or not to save VR-4HD RCS's settings.

[Yes] button	The settings at shutdown are saved in an open file (*.pv8), overwriting any earlier settings, and VR-4HD RCS ends. * If the target setting values have never been saved before, the Save VR-4HD Parameter Data As dialog box for entering a file name is displayed. This saves the setting values in a newly created file (*.pv8) of a different name.
[No] button	VR-4HD RCS ends without saving the settings at shutdown. NOTE Any changes made since the last time saved are all lost.
[Cancel] button	This cancels shutdown of VR-4HD RCS.

Panel Descriptions

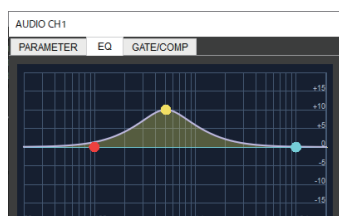
For more information about menu items, go to the VR-4HD Reference Manual and refer to “Menu List (Setup Screen)” (p. 2).



No.	Name	Explanation					
1	Menu bar	This displays the menus. For more information about the menus, refer to “Menu Bar” (p. 9).					
2	[UPDATE] button	This displays SYSTEM UPDATE dialog box. This performs an update of the VR-4HD’s system program (p. 15).					
3	MEMORY	* Operation is not possible when offline.					
		[SETUP] button	This displays MEMORY dialog box.				
		[MEMORY1] button : [MEMORY8] button	These control the memory function. The currently selected button lights up in blue. Save: Pressing the [SAVE] button and then clicking the button from [MEMORY1] through [MEMORY8] that corresponds to the number where you want to save the settings saves the current settings in the VR-4HD’s memory. Load: Clicking the button from [MEMORY1] through [MEMORY8] for the number whose settings you want to call up the settings saved in the VR-4HD. * The state of the [OUTPUT FADE] button on the operation panel is not saved in memory. The following settings are also not saved in memory. Only a single set is saved in the unit.				
		[SAVE] button	<table border="1"> <thead> <tr> <th>Dialog box</th> <th>Setting items saved in the unit</th> </tr> </thead> <tbody> <tr> <td>SYSTEM</td> <td>All setting items except “COLOR BAR OUTPUT” and “TEST TONE OUTPUT” * “COLOR BAR OUTPUT” and “TEST TONE OUTPUT” are always set to “OFF” when the VR-4HD starts up.</td> </tr> <tr> <td>MEMORY</td> <td>All setting items</td> </tr> </tbody> </table>	Dialog box	Setting items saved in the unit	SYSTEM	All setting items except “COLOR BAR OUTPUT” and “TEST TONE OUTPUT” * “COLOR BAR OUTPUT” and “TEST TONE OUTPUT” are always set to “OFF” when the VR-4HD starts up.
Dialog box	Setting items saved in the unit						
SYSTEM	All setting items except “COLOR BAR OUTPUT” and “TEST TONE OUTPUT” * “COLOR BAR OUTPUT” and “TEST TONE OUTPUT” are always set to “OFF” when the VR-4HD starts up.						
MEMORY	All setting items						
	[INIT] button	This initializes the currently selected memory in the VR-4HD, returning its values to their factory-default settings.					
4	SETUP	[SYSTEM] button	This displays SYSTEM dialog box. * “TOUCH PANEL CALIBRATION” and “FACTORY RESET” can be accessed only on the VR-4HD itself. * While offline, “FRAME RATE” cannot be manipulated.				
		[AUTO SWITCHING] button	This displays the AUTO SWITCHING dialog box.				
		[AUTO MIXING] button	This switches the bottom of the screen to display of the AUTO MIXING area (p. 8). Here you work with the Auto Mixing feature.				
		[ECHO CANCEL] button	This displays ECHO CANCEL dialog box.				
		[AUDIO FOLLOW] button	This displays AUDIO FOLLOW dialog box.				
	[BUS SELECT] button	This displays BUS SELECT dialog box.					
5	STILL IMAGE	[EDITOR] button	This displays the STILL IMAGE EDITOR screen (p. **). It sends the still image imported into the editor to the VR-4HD.				
		NOT READY/READY indicator	This changes to the READY indication (lighted up in red) when a still image is saved to the VR-4HD.				

No.	Name	Explanation
6	CONNECTION	[VR-4HD] button This switches VR-4HD RCS online or offline (p. 4). When switched online, you can operate the VR-4HD from VR-4HD RCS.
7	OUTPUT	MAIN, PVW, USB This displays the output format of output video (main, preview, and USB).
		[SETUP] button This displays the VIDEO OUTPUT dialog box.
8	VIDEO FX	1 (EFFECT PATTERN) This sets the filter effect applied to the main output video. When this is set to "OFF," no effect is assigned.
		[VALUE] knob This adjusts the amount of effect applied.
9	INPUT	CH1-4 This displays the input format of video channels 1-4.
		[SETUP] button This displays the VIDEO INPUT dialog box.
Operation panel		
This controls the operation panel on the VR-4HD. * When offline, the [FREEZE] button cannot be operated.		
FREEZE	2 (FREEZE MODE)	This sets the operation mode for freezes.
	3	When "FREEZE MODE" is set to "SELECT," this selects the input channel you want to freeze.
OUTPUT FADE	[SETUP] button	This displays the OUTPUT FADE dialog box.
	4 (OUTPUT FADE)	This sets fade color used during output fade.
10 COMPOSITION	[SETUP] button	This displays the COMPOSITION dialog box.
	BACKGROUND/A	This selects the video channel displayed as the background picture in PinP or in the A section (top or left) in split compositing.
	INSET/B	This selects the video channel displayed as the inset screen in PinP or in the B section (bottom or right) in split compositing.
TRANSITION	5 (MIX)	This specifies the transition pattern assigned to the [MIX] button.
	6 (WIPE)	This specifies the transition pattern assigned to the [WIPE] button.
KEY	7 (KEY TYPE)	This sets the key type (chroma key or luminance key) for key compositing.
	8 (KEY SOURCE CH)	This specifies the channel for the video displayed in the foreground during key compositing. When set to "OFF," operating the [KEY] button has no effect.
	[KEY LEVEL] knob	This adjusts the value of either "CHROMA KEY LEVEL" or "LUMI KEY LEVEL," according to the setting for "KEY TYPE."
AUDIO MIXER		
11 [SETUP] buttons	1-4, 5/6, 7/8, HDMI 1-4, FROM PC	These display the AUDIO dialog box for the respective input (audio channel 1-4, 5/6, 7/8, HDMI 1-4, or FROM PC). * For EQ and GATE/COMP graph operations, refer to the column below.
	MAIN	This displays the MAIN dialog box. * For EQ and MB COMP graph operations, refer to the column below.
	AUX	This displays the AUX dialog box.
	TO PC	This displays the TO PC dialog box.
AUDIO level meters		These display the volume levels of input/output audio.
[SOLO] buttons		These turn the Solo feature on (lighted up in blue) or off.
[MUTE] buttons		These turn the Mute feature on (lighted up in red) or off.
AUDIO level fader		These adjust the volume level of input/output audio.

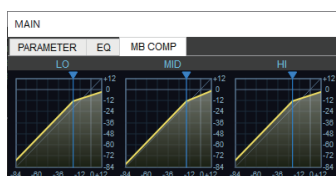
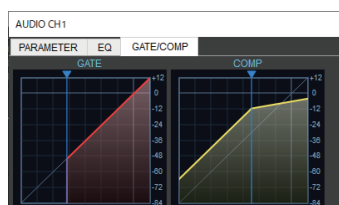
EQ Graph Operations



Points on the Graph

Dragging points changes the following values.
 EQ Hi/Mid/Lo: Drag the point vertically.
 EQ Hi/Mid/Lo FREQ: Drag the point horizontally.

GATE/COMP and MB COMP Graph Operations

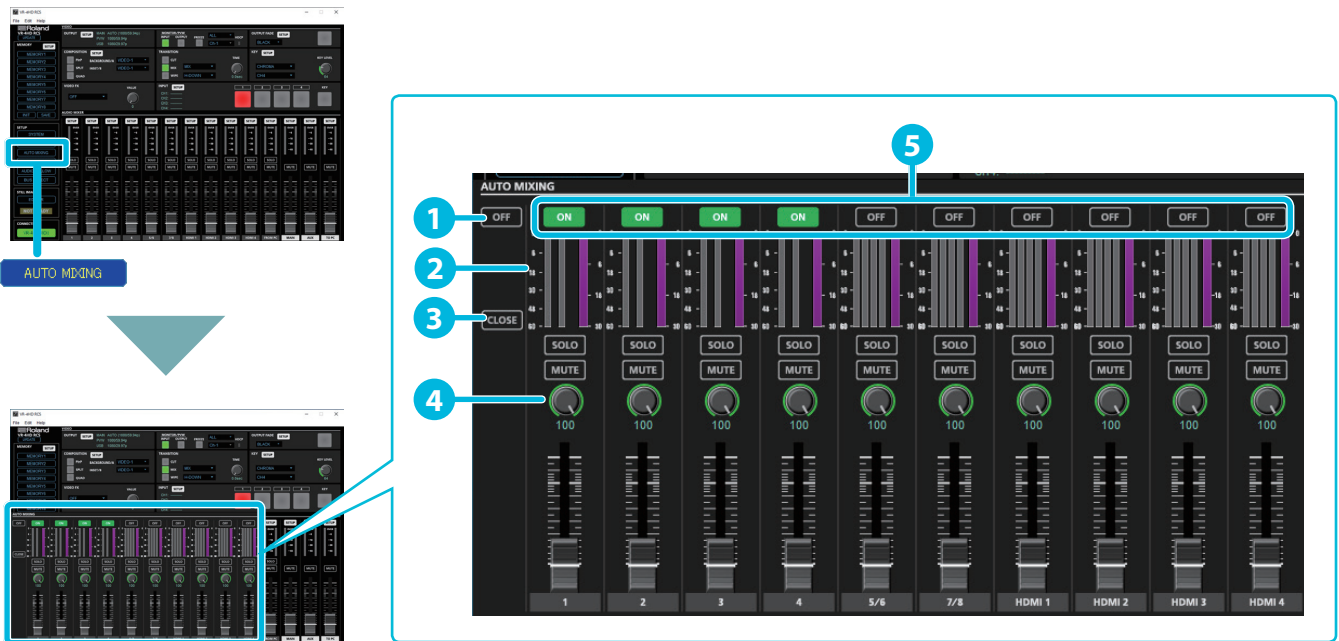


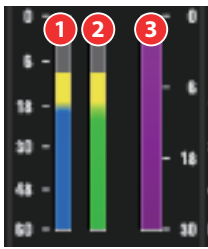
Graph Sliders

Dragging a slider (▼) horizontally changes the "THRESHOLD" value.

AUTO MIXING Display

Clicking the [AUTO MIXING] button switches the bottom of the screen to display of the AUTO MIXING area.

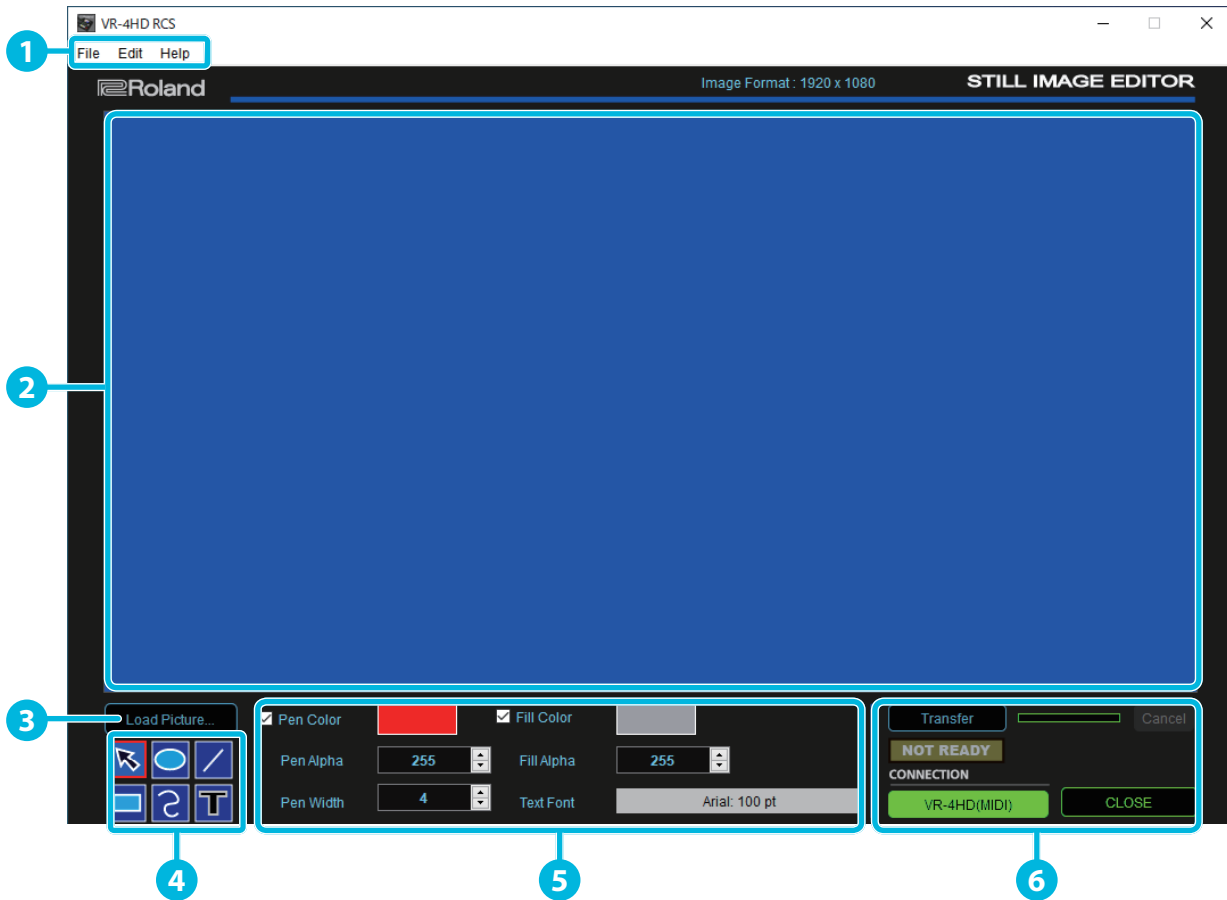



No.	Name	Explanation
1	Auto Mixing switch	This switches the Auto Mixing feature on or off.
2	Level Meters	 <ul style="list-style-type: none"> 1 These display the Auto Mixing input level. 2 These display the output level from Auto Mixing. 3 These indicate the Auto Mixing level. These are the levels of the internal Auto Mixing faders operated by the mixer itself.
3	[CLOSE] button	This returns display of the AUTO MIXING area to the usual display.
4	Weight level knobs	These set the priority for volume-level distribution.
5	Channel switches	These specify whether Auto Mixing is applied (ON) or not applied (OFF).

Menu Bar

Menu		Explanation
VR-4HD RCS Mac	About VR-4HD RCS	This displays the version information dialog box for VR-4HD RCS.
	Hide VR-4HD RCS	This hides the VR-4HD RCS window.
	Hide Others	This hides all other application windows except the VR-4HD RCS window.
	Show All	This displays all application windows.
	Quit VR-4HD RCS	This quits VR-4HD RCS (p. 5).
File Windows	New Parameters	This returns the settings in VR-4HD RCS to their default values. * If current settings differ from default values, a popup dialog box appears, allowing you to save the setting values to the computer as a file (*.pv8).
	Open Parameters	This displays the Open VR-4HD Parameter Data dialog box. This opens the file (*.pv8) where settings are saved and calls up the settings (p. 13).
	New Image	This returns the editing area to its initial state. * If a still image has not been saved, a popup dialog box appears, enabling you to save the still image (*.riz).
	Open Image	This displays the Open Image Data dialog box. This opens an existing still image (*.riz) (p. 12).
	Save Parameters	This saves the current setting values, overwriting the open file (*.pv8; p. 13).
	Save Parameters As	This displays the Save VR-4HD Parameter Data As dialog box. This saves the setting values in a newly created file (*.pv8) of a different name (p. 13).
	Save Image	This saves the still image (*.riz), overwriting any earlier instance (p. 12).
	Save Image As	This displays the Save Image As dialog box. This saves the still image (*.riz) under a different name (p. 12).
	Backup All Settings	This displays the Save VR-4HD Backup Data As dialog box. This saves all settings in the VR-4HD as a backup file (*.pb8; p. 14). * Operation is not possible when offline.
	Restore All Settings	This displays the Open VR-4HD Backup Data dialog box. This restores the settings saved in a backup file (*.pb8) to the VR-4HD (p. 14). * Operation is not possible when offline.
Quit	This quits VR-4HD RCS (p. 5).	
Help	VR-4HD RCS Help	This displays the VR-4HD RCS Owner's Manual (this document).

STILL IMAGE EDITOR Screen



No.	Name	Explanation
1	Menu bar	This displays the menus. For more information about the menus, refer to "Menu Bar (STILL IMAGE EDITOR Screen)" (p. 11).
2	Editing area	This displays the object currently being edited.
3	[Load Picture] button	This displays the Open File dialog box. Here you load in a still image in JPEG, GIF, PNG, or another such format. Enlarging or reducing a still image Select a still image, then drag a corner to enlarge or reduce the image. The still image's aspect ratio is maintained. Trimming a still image Select a still image, then drag a side to trim the image.
4	Drawing tools	<p>Selecting an object</p> <ul style="list-style-type: none"> Click to select a specific object. Dragging the area around objects lets you select multiple objects inside the range. To release a selected object, click anywhere outside the selected object. <p>Moving an object</p> <p>Drag a selected object to move it. When movement is possible, the shape of the mouse cursor changes to .</p> <p>Oval tool</p> <p>Dragging at an angle draws an oval or rectangle.</p> <p>Rectangle tool</p> <p>Enlarging or reducing a shape</p> <p>Select a shape, then drag a side or corner of the selection box to enlarge or reduce the shape.</p> <p>Line tool</p> <p>Dragging this draws a straight line.</p> <p>Freehand tool</p> <p>Dragging this draws a smooth curve.</p> <p>Text entry tool</p> <p>Clicking this creates a text box. Clicking the text box makes it possible for you to type in text. * When you create a new text box, the word "TEXT" is automatically entered in it.</p>

No.	Name	Explanation
5	Pen Color (Check box, color box)	This shows the current color of border lines. Selecting the check box enables border lines. Clicking the color box displays the Select Color dialog box. This lets you change the color of border lines for shapes.
	Pen Alpha	This sets the transparency of shape border lines.
	Pen Width	This sets the width of shape border lines.
	Fill Color (Check box, color box)	This shows the current fill color. Selecting the check box enables filling. Clicking the color box displays the Select Color dialog box. This lets you change the fill color for shapes.
	Fill Alpha	This sets the transparency of shape filling.
	Text Font	This displays the font and font size. Clicking this displays the Select Font dialog box. This lets you change the type, size, and other values of the font used in the text box.
6	[Transfer] button	This sends the still image displayed in the editing area to the VR-4HD (p. 12).
	Progress bar	This shows the transmission progress of the still image being sent.
	[Cancel] button	This quits sending the still image.
	NOT READY/READY indicator	This changes to the READY indication (lighted up in red) when a still image is saved to the VR-4HD.
	[VR-4HD] button	This switches VR-4HD RCS online or offline (p. 4). When switched online, you can operate the VR-4HD from VR-4HD RCS.
	[Close] button	This quits the STILL IMAGE EDITOR screen.

Menu Bar (STILL IMAGE EDITOR Screen)

Menu	Explanation	
File	New Parameters	This is similar to the File menu on the "Menu Bar" (p. 9).
	Open Parameters	
	New Image	This returns the editing area to its initial state. * If a still image has not been saved, a popup dialog box appears, enabling you to save the still image (*.riz).
	Open Image	This displays the Open Image Data dialog box. This opens an existing still image (*.riz) (p. 12).
	Save Parameters	This is similar to the File menu on the "Menu Bar" (p. 9).
	Save Parameters As	
	Save Image	This saves the still image (*.riz), overwriting any earlier instance (p. 12).
	Save Image As	This displays the Save Image As dialog box. This saves the still image (*.riz) under a different name (p. 12).
	Backup All Settings	This is similar to the File menu on the "Menu Bar" (p. 9).
	Restore All Settings	
Quit (MS Windows only)		
Edit (*1)	Undo	This restores the last operation to its previous state.
	Redo	If no other operation has been performed since an immediately previous Undo operation, this re-executes the action reverted by the Undo operation.
	Delete Selected Items	This deletes the selected objects.
	Select All	This selects all objects.
	Bring to Front	This moves the selected object to the front.
	Bring Forward	This moves the selected object forward one layer.
	Send Backward	This moves the selected object backward one layer.
	Send to Back	This moves the selected object to the back.
	Resize to Fit All Sides	This resizes the selected object to the size of the entire editing area. The aspect ratio is not maintained. (*2)
	Resize to Fit Right and Left	This resizes the selected object to fit the width of the editing area, keeping the aspect ratio unchanged. (*2)
	Resize to Fit Top and Bottom	This resizes the selected object to fit the height of the editing area, keeping the aspect ratio unchanged. (*2)
	Change Background Color	This displays the Color dialog box. Here you set the background color.
Auto Change Background Color	Selecting this check box makes the background color automatically set to the extraction color during DSK composition.	

(*1) Right-clicking inside the editing area displays a similar menu.

(*2) Text boxes cannot be resized.

Sending Still Images to the VR-4HD

You can send a still image (*.riz) from the STILL IMAGE EDITOR screen (p. 10) to the VR-4HD. The sent still image can be output from the VR-4HD and can also be used as a source for key composition.

At the STILL IMAGE EDITOR screen, you can import still images in JPEG, GIF, PNG, and other such formats, adjust their size, and trim them. You can also superimpose shapes and text onto still images. Edited still images are saved with the "*.riz" file extension. Opening a riz file lets you continue editing it from the state it was saved in.

* You can also capture still images from input video on the VR-4HD.

Sending a Still Image

NOTE

Either the still image sent from VR-4HD RCS or the captured still image is temporarily stored in the VR-4HD.

If a new still image is sent from VR-4HD RCS or is captured while a still image is already saved, the previously saved still image is overwritten.

Also, still-image data is deleted when the power is turned off.

1. Switch VR-4HD RCS online (p. 4).
2. Click the [EDITOR] button to display the STILL IMAGE EDITOR screen (p. 10).



3. Adjust the size of the still image and use the drawing tools to edit shapes and text.

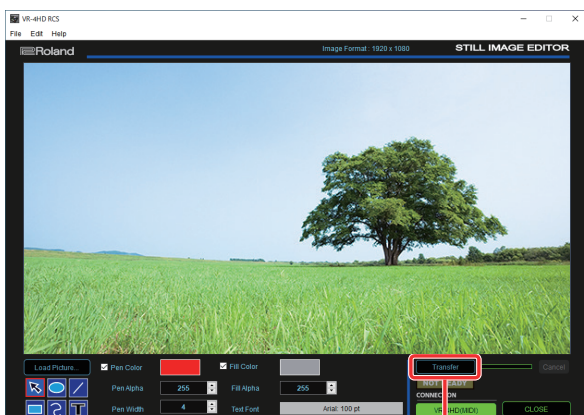
• Loading a still image in JPEG, GIF, PNG, or another format

Click the [Load Picture] button to display the Open File dialog box, then select the still image.

• Opening a still image (*.riz) saved on the computer from the editor

From the "File" menu, select "Image" → "Open Image" to display the Open Image Data dialog box, then select the still image.

4. Click the [Transfer] button to send the still image to the VR-4HD.



[Transfer] button

The progress bar lets you monitor the progress.

When sending of the still image is finished, the message "Transfer complete" is displayed under the progress bar.

MEMO

When a still image is saved on the VR-4HD, the NOT READY/READY indicator changes to the READY indication (lighted up in red).

Saving a Still Image

Still images loaded into the STILL IMAGE EDITOR screen are saved with the "*.riz" file extension.

Saving by Overwriting

1. From the "File" menu, select "Image" → "Save Image."

The still image is saved, overwriting any earlier instance.

* If the still image you're working on has never been saved before, the Save Image As dialog box is displayed to let you enter a file name. Here you assign a file name (*.riz) and save the still image.

Saving Using a Name You Specify

1. From the "File" menu, select "Image" → "Save Image As."

The Save Image As dialog box appears.

2. Specify where to save the still image and the name of the file (*.riz), then click the [Save] button.

The still image is saved on the computer.

Opening an Existing Still Image (*.riz)

1. From the "File" menu, select "Image" → "Open Image."

The Open Image Data dialog box appears.

2. Select the still image (*.riz) and click the [Open] button.

The still image is opened.

Saving VR-4HD RCS Settings As a File

You can save the values of settings made using VR-4HD RCS to the computer as a file (*.pv8), and load the configured state when needed.

* You can also save settings that were created in VR-4HD RCS while offline.

NOTE

Only VR-4HD RCS settings are saved in the file. Values in the VR-4HD's memories (1 through 8) are not saved. To save all settings that are in the VR-4HD, use the backup feature (p. 14).

Saving Settings

Saving by Overwriting

1. From the "File" menu, select "Save Parameters."

This saves the current setting values, overwriting the open file (*.pv8).

* If the target setting values have never been saved before, the Save VR-4HD Parameter Data As dialog box for entering a file name is displayed. This saves the setting values in a newly created file (*.pv8) of a different name.

Saving Using a Name You Specify

1. From the "File" menu, select "Save Parameters As."

The Save VR-4HD Parameter Data As dialog box appears.

2. Specify the destination for saving the file and a file name (*.pv8), then click the [Save] button.

The file is saved to the computer.

Loading Settings

1. From the "File" menu, select "Open Parameters."

The Open VR-4HD Parameter Data dialog box appears.

2. Select the settings file (*.pv8), then click the [Open] button.

The settings are loaded.

Backing Up/Restoring VR-4HD Settings

You can group together and back up all settings in the VR-4HD to a computer. You can then restore the saved backup file (*.pb8) to the VR-4HD when necessary.

Backing Up

- 1. Switch VR-4HD RCS online (p. 4).**
- 2. From the “File” menu, select “Backup All Settings.”**
The Save VR-4HD Backup Data As dialog box appears.
- 3. Specify the destination for saving the file and a backup file name (*.pb8), then click the [Save] button.**
The backup file is saved to the computer.

Restoring

- 1. Switch VR-4HD RCS online (p. 4).**
- 2. From the “File” menu, select “Restore All Settings.”**
The Open VR-4HD Backup Data dialog box appears.
- 3. Select the backup file (*.pb8), then click the [Open] button.**
The restore operation is executed.

Updating the System Software of the VR-4HD

How to tell the version

1. You can use the VR-4HD's [SYSTEM SETUP] button → <SYSTEM> → <VERSION> to check the current version.
 - * Don't perform the update if the product is already up-to-date.

Getting the update file

Download the system program file for the VR-4HD from the following Roland website.

Upgrade information for the system program is provided at the Roland website.

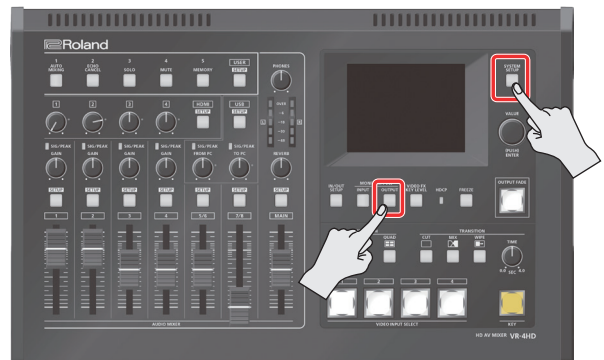
<http://proav.roland.com>

Updating the System Software

NOTE

Never turn off the VR-4HD's power while the update is in progress. Otherwise the system program or the VR-4HD itself may be destroyed.

1. Using a USB cable, connect the VR-4HD and the computer (p. 2).
2. Hold down the VR-4HD's [OUTPUT] and [SYSTEM SETUP] buttons, then press the [POWER] button to start the VR-4HD.



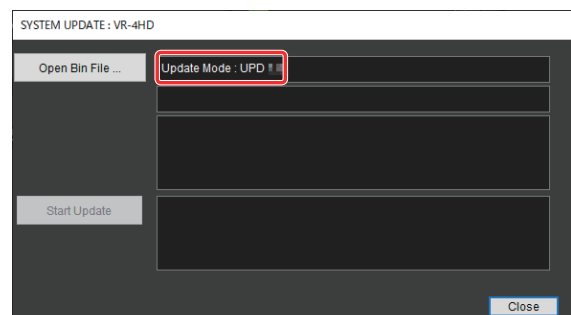
The VR-4HD starts up in the Update mode (with the [KEY] button flashing in yellow).

3. Start VR-4HD RCS, and then click the [UPDATE] button.
 - * You can perform an update as long as the VR-4HD is connected to a computer, even when not online (p. 4).

[UPDATE] button



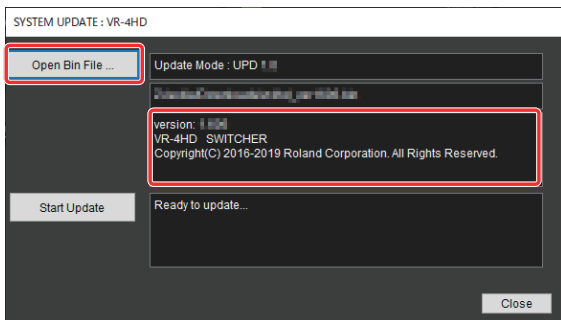
4. When the SYSTEM UPDATE dialog box appears, check to make sure "Update Mode" is displayed in the top field.



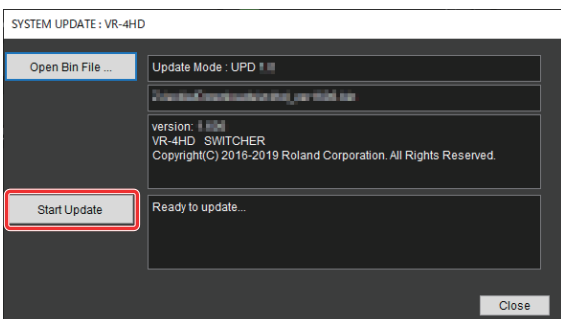
* If "----" is displayed in the top field, disconnect and reinsert the USB cable.

- Click the [Open Bin File] button to display the Update Bin File dialog box, then specify the program file (vr4hd_ver****.bin).

The version information for the update file is displayed in the middle field.



- Click the [Start Update] button.
(To quit without updating, click the [Close] button.)



The update starts.

NOTE

Never exit or perform any operation in the SYSTEM UPDATE dialog box while an update is in progress.

When the update is complete, the VIDEO INPUT SELECT [1] through [4] buttons on the VR-4HD light up in green.



- Turn the power to the VR-4HD off and back on, then check the version information.

Follow the procedure in "How to tell the version" (p. 15) to check whether the system has been updated.

- * Roland is an either registered trademark or trademark of Roland Corporation in the United States and/or other countries.
- * Intel and Intel Core 2 Duo are either registered trademarks or trademarks of Intel Corporation.
- * Microsoft and Windows are either registered trademarks or trademarks of Microsoft Corporation.
- * Apple, Macintosh, Mac OS, and the Mac logo are either registered trademarks or trademarks of Apple Inc.