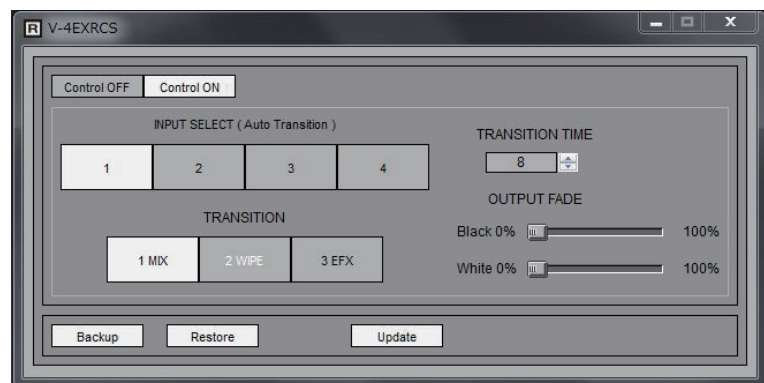


V-4EX RCS Dedicated Remote Control Software

Owner's Manual

This document explains the V-4EX's dedicated remote control software. By connecting the V-4EX to your computer via USB, you will be able to copy settings (backup) or update the system software of the V-4EX in addition to remote controlling the unit from your computer.



Although this document describes the functionality using screen shots, these may differ from the default status of this software.

Copyright © 2013 ROLAND CORPORATION

All rights reserved. No part of this publication may be reproduced in any form without the written permission of ROLAND CORPORATION.

* Roland is either registered trademark or trademark of Roland Corporation in the United States and/or other countries.

* All product names mentioned in this document are trademarks or registered trademarks of their respective owners.

System Requirements

Operating System

- Windows XP Home Edition / Professional Service Pack 3 or later
- Windows Vista Service Pack 2 or later
- Windows 7 Service Pack 1 or later
- Windows 8
- Mac OS X 10.7 or later

CPU

- Windows Pentium/Celeron 1.6 GHz or higher
- Mac OS Intel Processor

RAM

- 512 MB or more

Graphics

- 1024 x 768 dots or more
- 65,536 color (16-bit color) or more

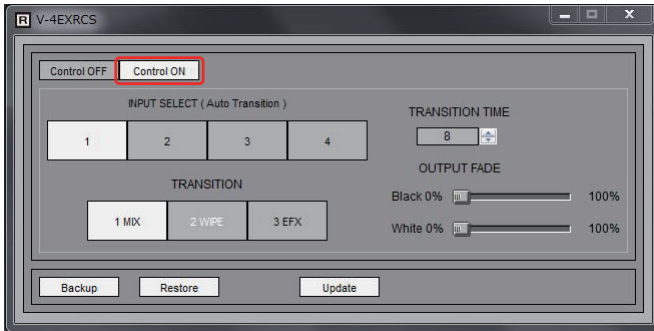
USB Port

- Hi-speed USB (complaint with USB 2.0) is recommended

About Operations of This Software

Remote Controlling the V-4EX

Connect your computer with the V-4EX via USB and turn on power. Click [Control ON] of this software.



You can remote control the following operations.

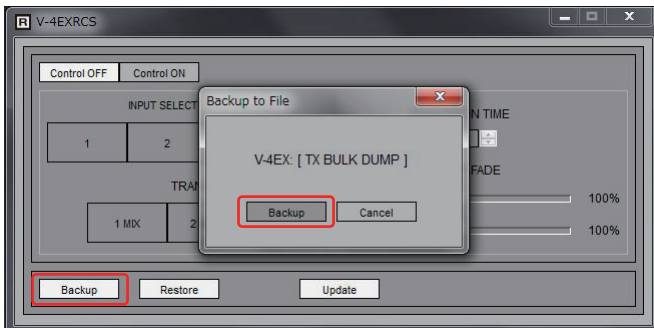
INPUT SELECT	Select input channel of the V-4EX
TRANSITION	Select transition type of the V-4EX
TRANSITION TIME	Adjust transition time of the V-4EX
OUTPUT FADE	Set output fade (black/white) of the V-4EX

NOTE

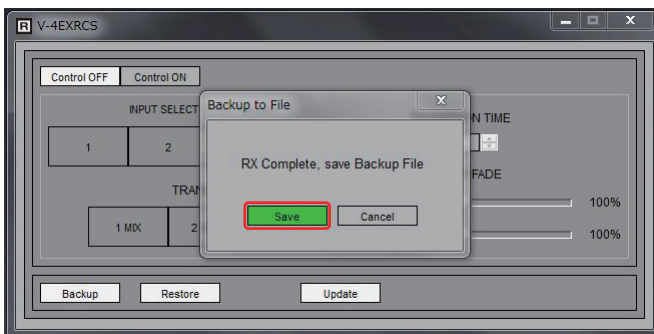
The remote control commands of this software are transmitted using V-LINK. If you stop remote controlling and operate on the unit's panel, click [Control OFF] of this software.

Copying the Setting Parameters of the V-4EX to Computer (Backup)

Connect your computer with the V-4EX via USB and turn on power. Click [Backup] of this software.



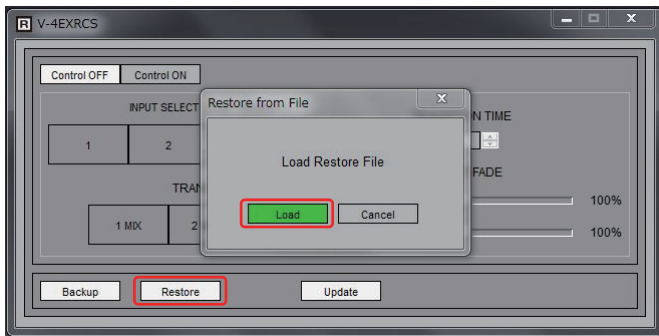
When the screen shown above is displayed, select and execute "STD:Tx BULK DUMP" in MIDI menu.



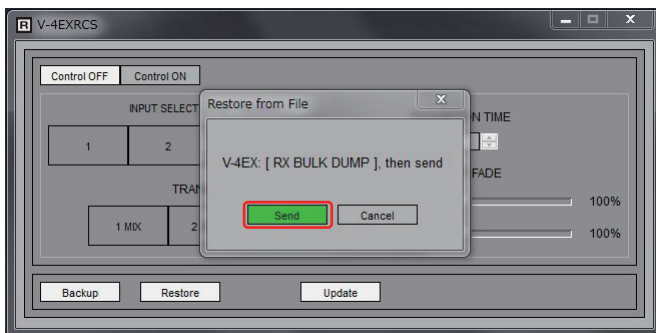
When the parameter transmission from the V-4EX is completed, the screen shown above is displayed. Click [Save] to save to your computer. When "Complete" message is displayed, the copying is completed.

Restoring the Setting Parameters

Connect your computer with the V-4EX via USB and turn on power. Click [Restore] of this software.



When the screen shown above is displayed, click [Load] and select the backup file.



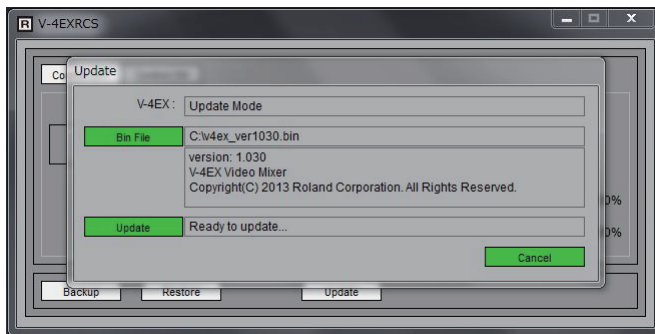
When the screen shown above is displayed, select and execute "STD:Rx BULK DUMP" in MIDI menu. Then click [Send]. When "Complete" message is displayed, the restoring is completed.

Updating the System Software of the V-4EX

Turn on the power of the V-4EX and check current version using "VERSION" in SETUP menu. Turn off the power once after checking. Connect your computer with the V-4EX via USB and turn on power while your are holding down the [MENU] button and the [INPUT] button in MONITOR section.



The INPUT SELECT indicators 1-4 of right side light up in green. Check that these buttons are lighting and click [Update] of this software.



When the screen shown above is displayed, use the following steps to update.

- Click [Bin File] and select the update file of "v4ex_ver****.bin".
- As the version number is displayed, check that the number is the desired one.
- Click [Update] to start the system update.
- When the updating process is completed, the "Update Complete" message appears and power of the V-4EX is turned off automatically.

NOTE

Never turn off power of the V-4EX while the update process is going on.